

# GRAND CENTRAL 凱滙



CREATING BETTER LIFESCAPES

THE NEW LANDMARK

## CREATING BETTER LIFESCAPES



Lifescape is our vision to build a better life together, where communities thrive in harmony by embracing green living and wellness, by engaging with all and pursuing meaningful designs, and by seeking innovation while respecting heritage and culture.

Grand Central is our commitment to the future of Kwun Tong, creating a better community where people better live, work, and play.



PHASE II ENTRANCE



## WORLD-CLASS DEVELOPMENT

As the new landmark in the heart of Kwun Tong, Grand Central is envisioned as a strong statement driving the transformation of the neighbourhood into the new CBD.





TIME LOOP BY PAUL COCKSEDE

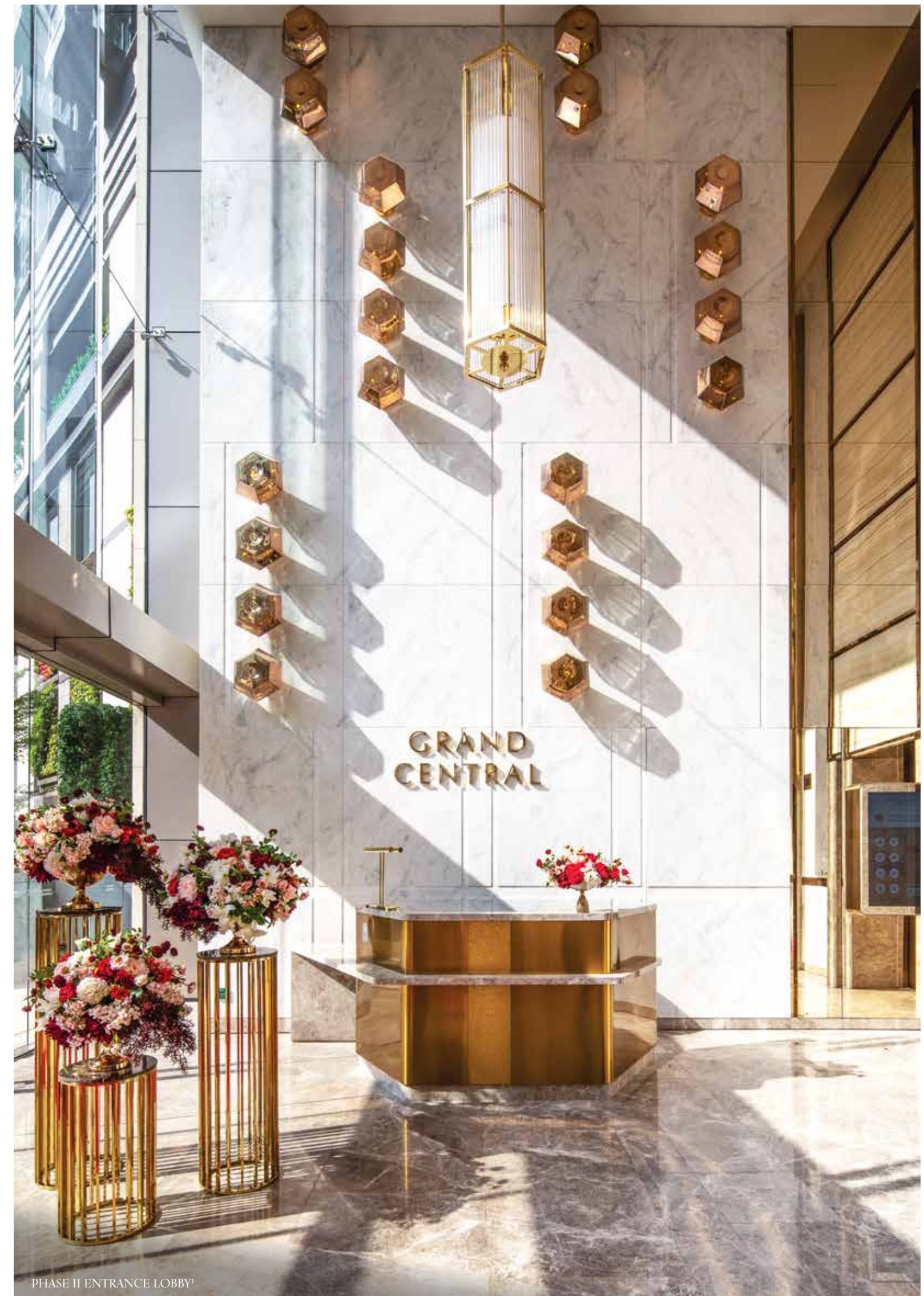


PHASE II ENTRANCE



## A PERFECT WELCOME

The double height lobby, accessorized with fine arts, elegantly creates a transitional space. Leaving the city hustle behind and entering a world of calm and relaxation.







GRAND CENTRAL CLUBHOUSE AND PODIUM PUBLIC OPEN SPACE

## GARDEN IN THE CITY

Inspired by Kew Gardens in London, Grand Central sits elegantly on top of delightful spaces of verdant greenery, embracing the concept of living harmoniously with nature.



GRAND CENTRAL PODIUM PUBLIC OPEN SPACE



GRAND CENTRAL PODIUM PUBLIC OPEN SPACE



GRAND CENTRAL PODIUM PUBLIC OPEN SPACE



GRAND CENTRAL PODIUM PUBLIC OPEN SPACE



GRAND CENTRAL PODIUM PUBLIC OPEN SPACE



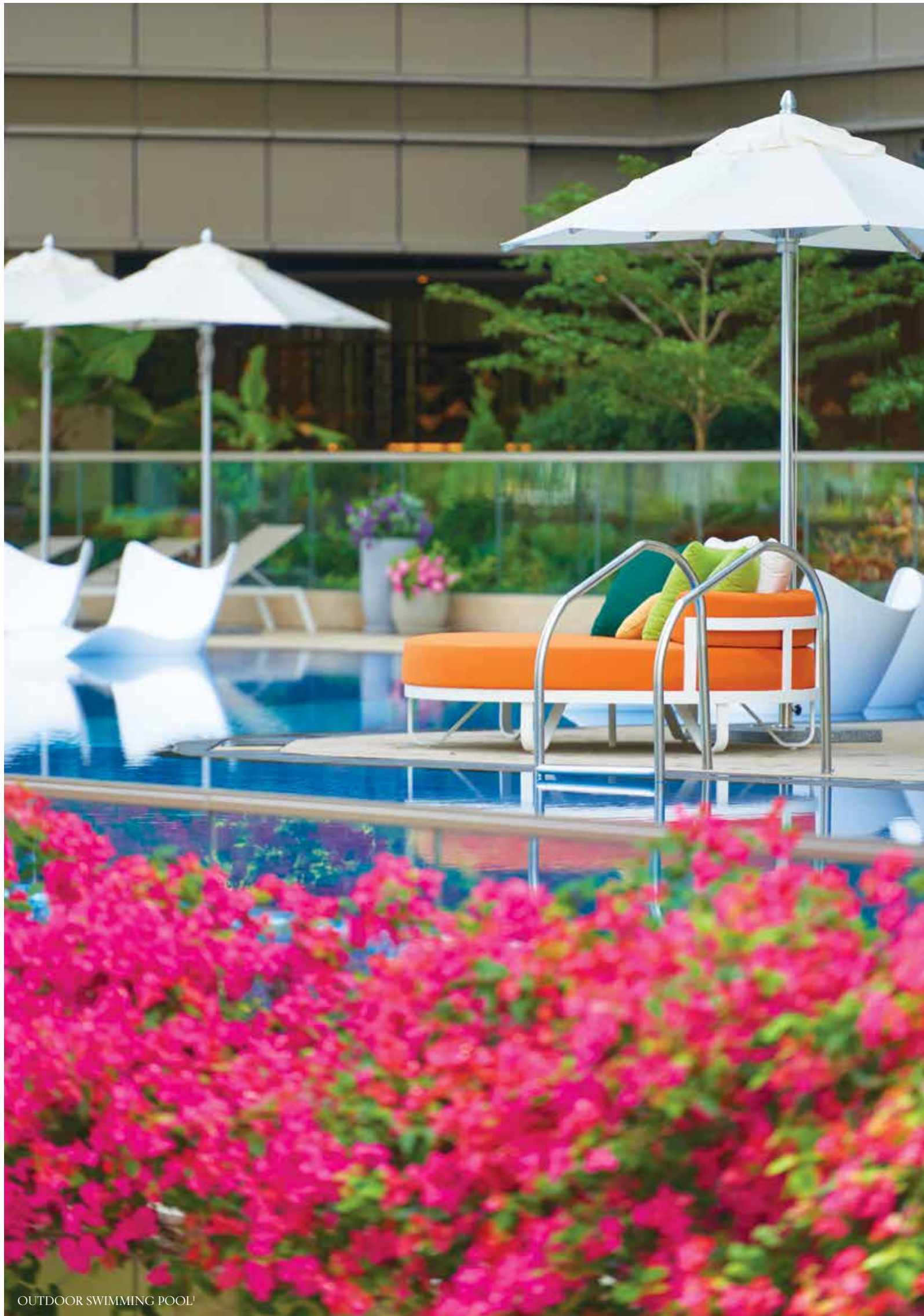
GRAND CENTRAL PODIUM PUBLIC OPEN SPACE



GRAND CENTRAL PODIUM PUBLIC OPEN SPACE

## AN URBAN EDEN

In the beautifully landscaped garden, there is space to breathe, room to think, time to be, right here in the heart of the city, sheltered from all hustle and bustle.



OUTDOOR SWIMMING POOL

## A MOMENTS OF DELIGHT

Whether it be sunbathing at the infinity pool, rejuvenating at the sauna, or indulging yourself at the pool deck, water invites all into its soothing nature.





OUTDOOR SWIMMING POOL!

## BIOPHILIC DESIGN PHILOSOPHY

At Grand Central, nature is woven into the very fabric of the whole building, and tranquil pockets of relaxation are available throughout for a quiet moment with yourself.



ORCHID GARDEN<sup>43</sup>



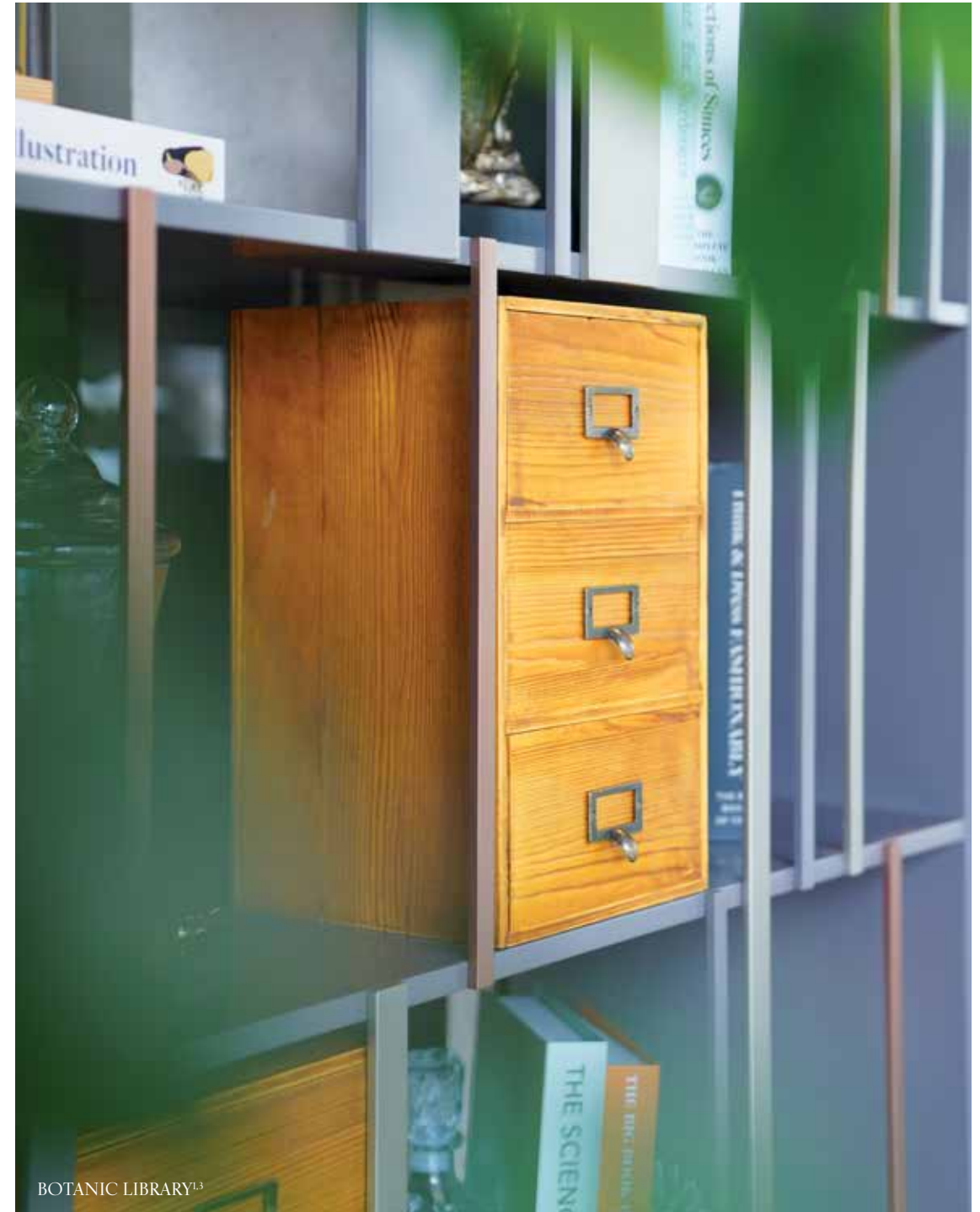


ORCHID GARDEN<sup>13</sup>

## YOUR PRIVATE BACKYARD

Surrounded by lush gardens, the clubhouse outdoor area offers a true sense of escapism and an idyllic setting to unwind.





## GRAND GARDEN<sup>3</sup> CLUBHOUSE

Modelled on the aesthetic of a luxury hotel, the Grand Garden<sup>3</sup> clubhouse offers well-appointed spaces ideal for tranquil lounging or intimate social gatherings.





*"Each time you walk around Grand Central,  
there is a delight in each space that you walk through,  
and it makes you smile. It's simply a stunning experience."*

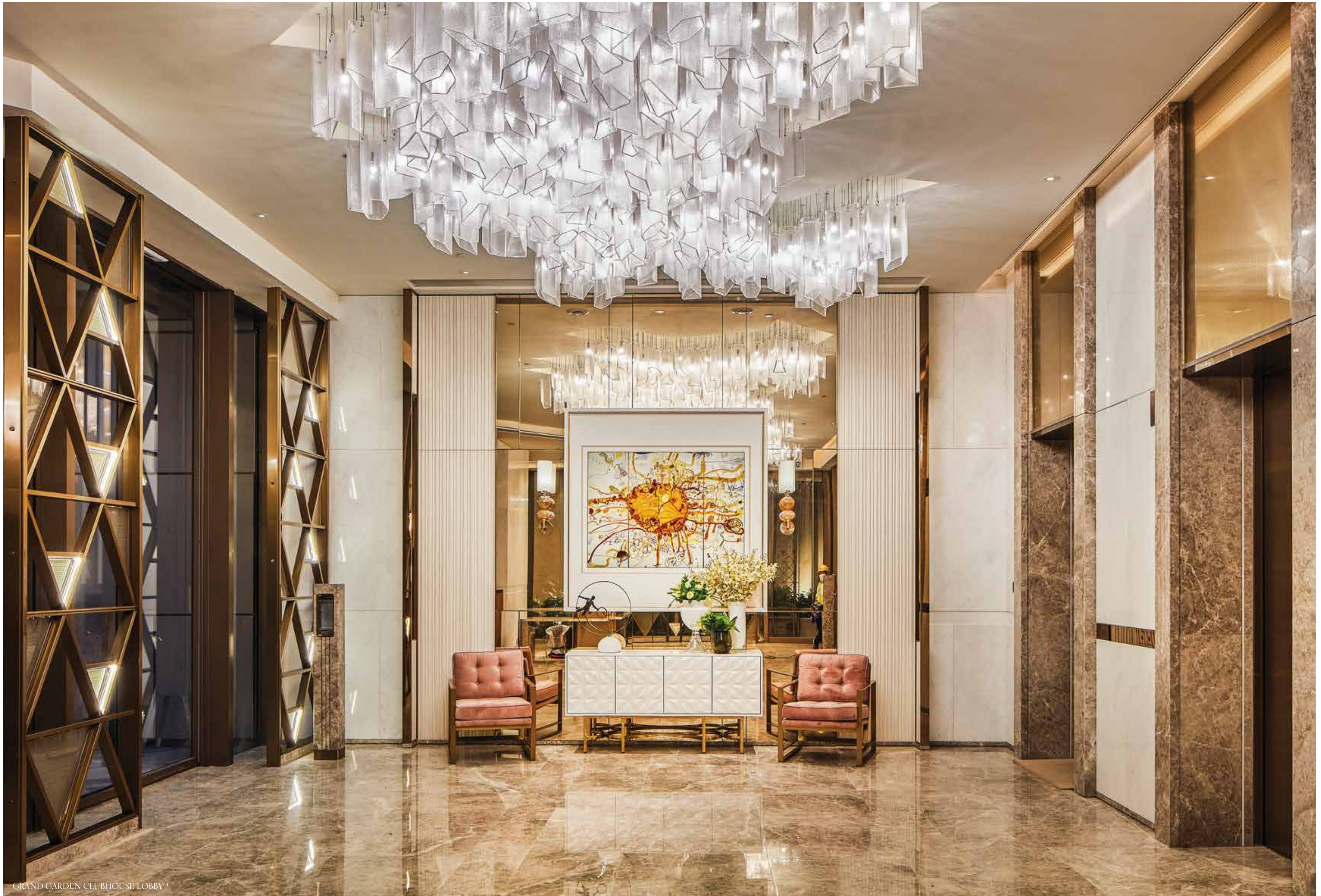
- Emma Maclean

## DESIGN OF SOPHISTICATION

As the world's leading design firm, Hirsch Bedner Associates (HBA) has designed for the clubhouse a place where body, mind and soul are in perfect equilibrium.

Taking a holistic approach, award winning interior designer Emma Maclean adds to the refinement of the luxury amenities. With the subtle touch of natural elements, Maclean creates an intricate and charming environment that is a delight to explore.



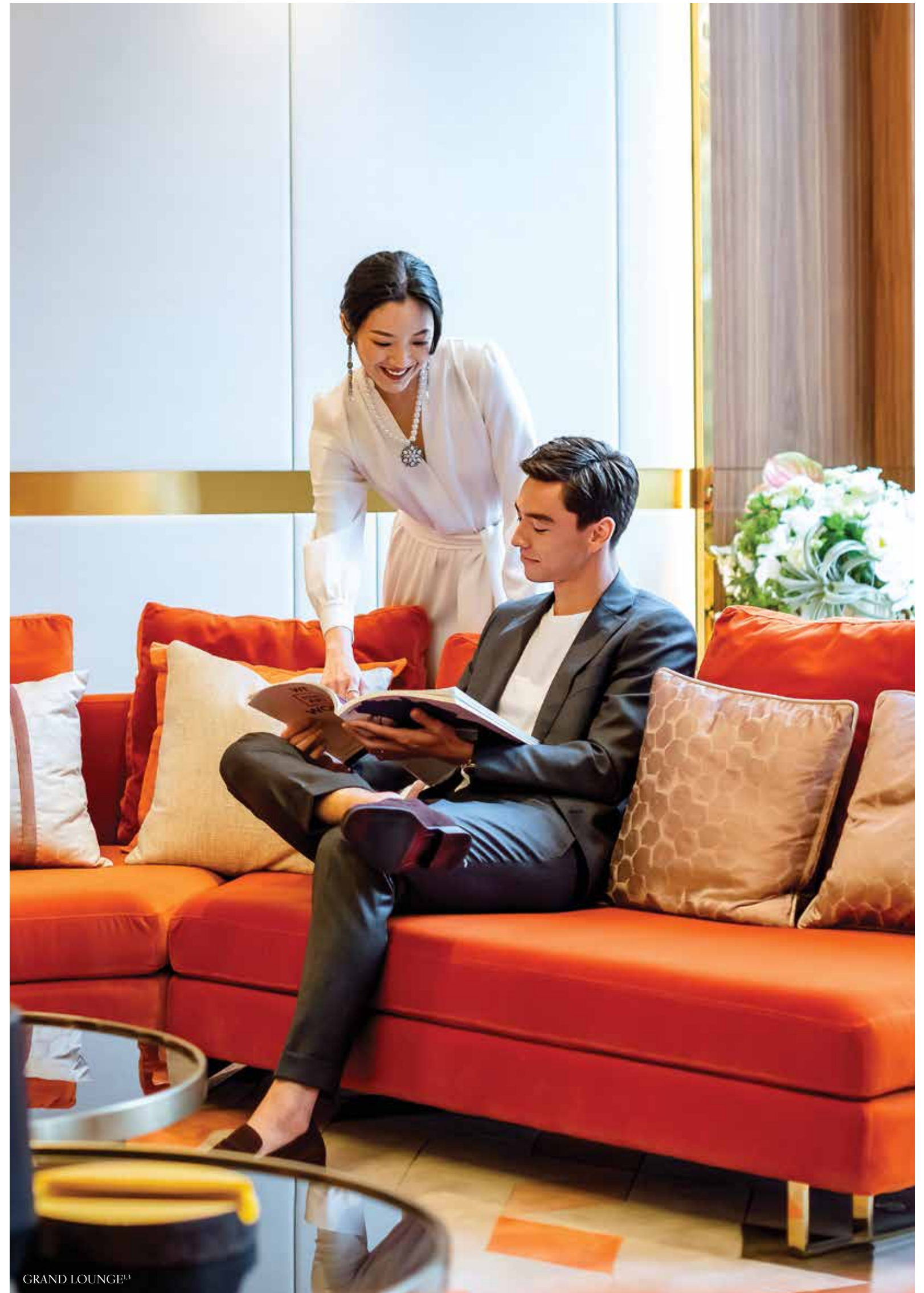




GRAND GARDEN CLUBHOUSE LOBBY<sup>13</sup>

## LUXURY REDEFINED

Savour a glass of wine at the Grand Lounge<sup>3</sup>, read a captivating book at The Library<sup>3</sup>, or play a game of chess while the sun sets, sheltered from the city buzz outside.







THE LIBRARY<sup>3</sup>

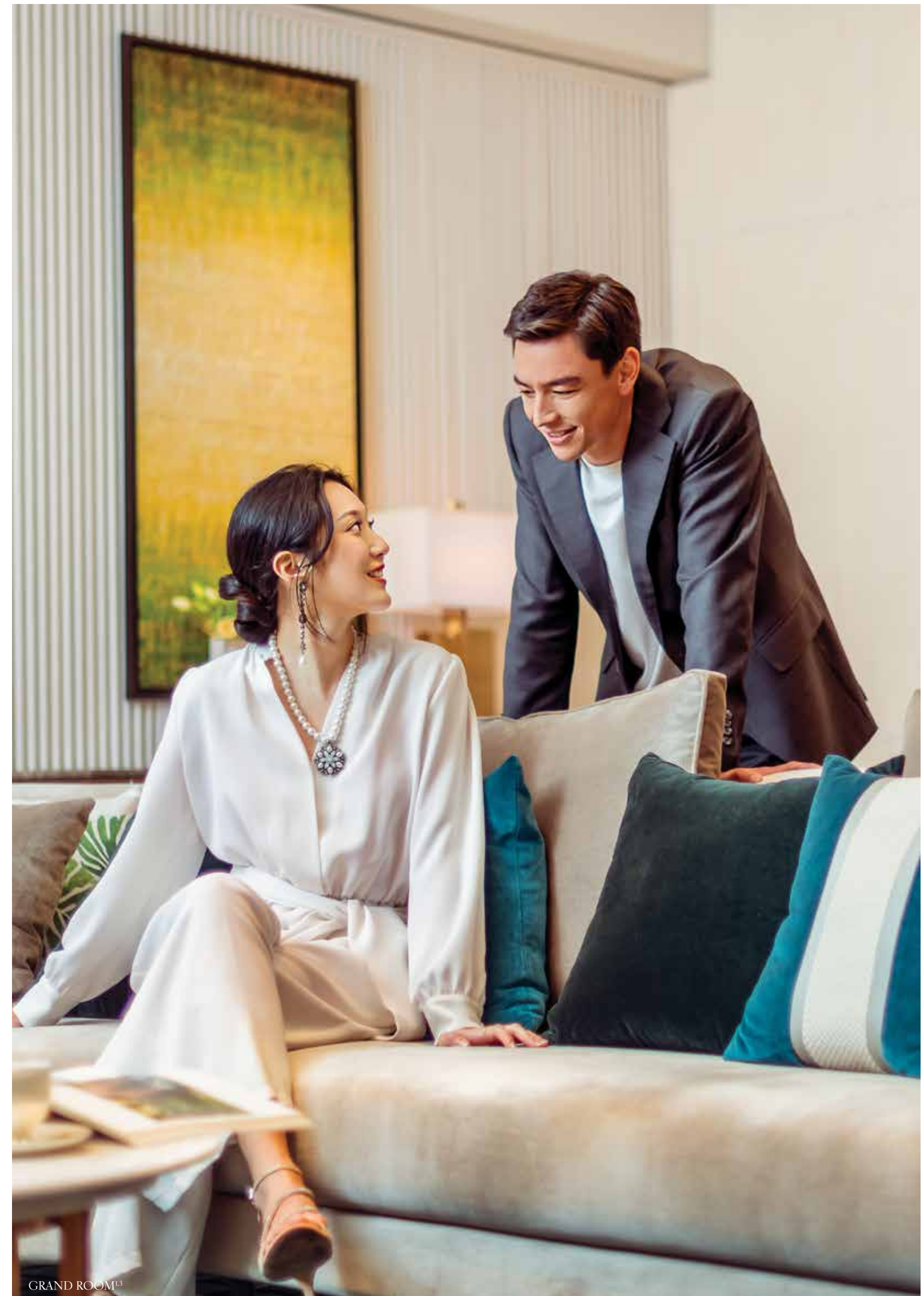
## AN AURA OF SERENITY

With its fresh and beautiful aesthetic, the tranquil library offers a quiet haven for nourishing the mind and escaping into the pages of a great book.



## UNRIVALLED EXCLUSIVITY

Enjoy exclusive access to the tastefully adorned banquet rooms for relaxation and socializing. Elegant but mellow spaces to entertain, unwind and gather with friends or family.





## ELEGANTLY CRAFTED SPACES

With a thoughtfully overall plan, the facilities harmoniously and effortlessly connect to each other's making the experience of walking from facility to facility a delight and a pleasurable journey.









GRAND GARDEN CLUBHOUSE LOBBY<sup>13</sup>



GRAND GARDEN CLUBHOUSE LOBBY<sup>13</sup>

## A BESPOKE EXPERIENCE

An elegant salon and lobby set the stage for some of Grand Central's other amenities, bringing the overall energy of the day to another level, and keeping residents of all age entertained.





THE WOODS<sup>3</sup>

## A WONDERLAND OF INSPIRATION

The plethora of fun elements in The Woods<sup>3</sup> that will keep the little ones occupied. Accessorized with a giant labyrinth, a slide and whimsical and educative game sets, the playroom is a colourful escape that sparks imagination.



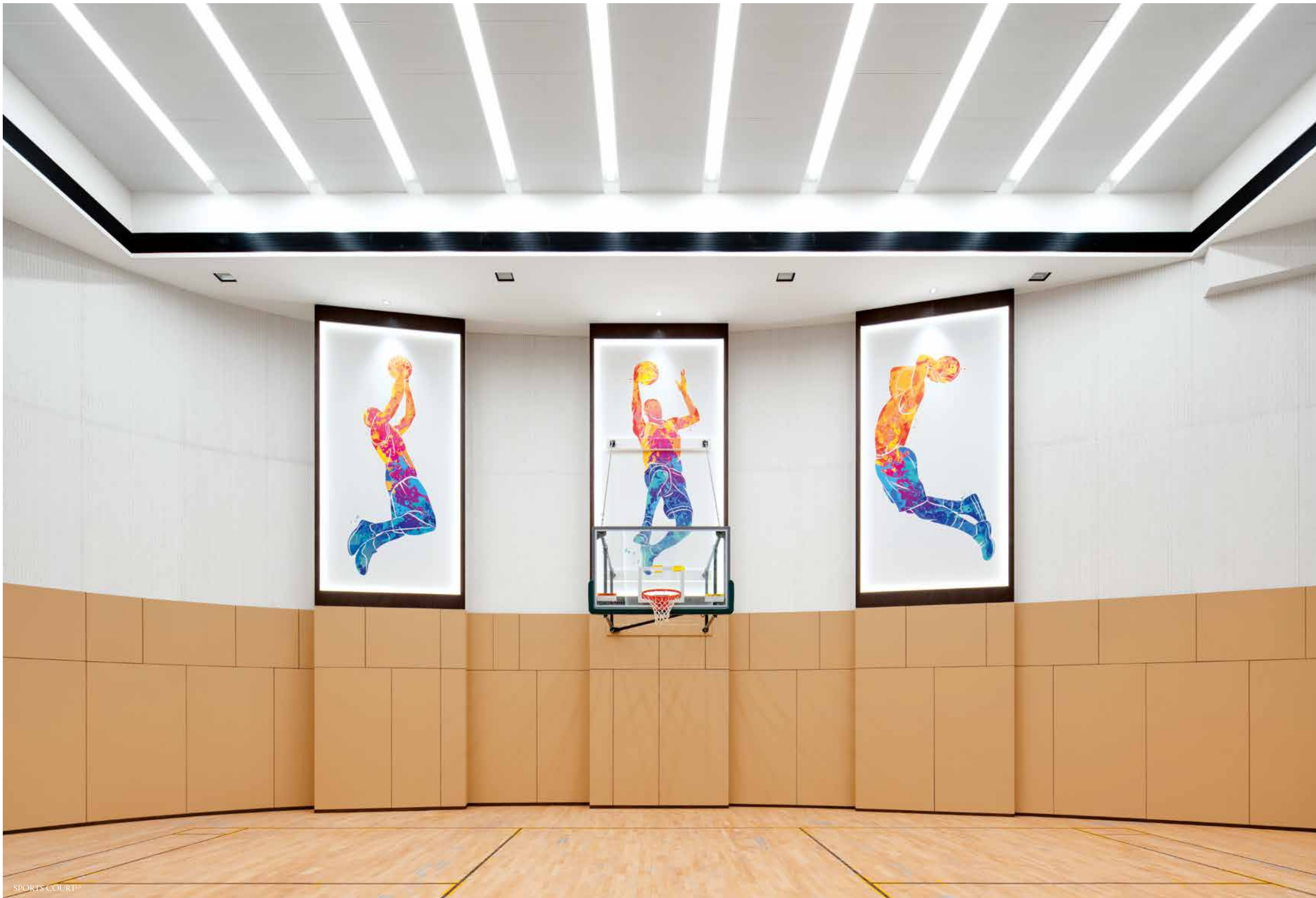




YOGA ROOM<sup>3</sup>

## AN ELEVATED EXPERIENCE

Harmonizing your body, mind and spirit, enjoy a relaxing wellness retreat in the Yoga Room<sup>3</sup>, improving your wellbeing and vitality for the rest of the day.







PHASE II ENTRANCE

## NOTES

1. The photographs contained in this advertisement / promotional material are taken on 23 April, 1 May, 7 May, 8 May and 9 May 2021 respectively at the Development and its clubhouse. They have been processed with computerized imaging techniques and are for reference only. The photographs are not for the purpose of displaying the final appearance of the Development upon completion nor the view from any of its units. This photograph does not constitute and shall not be construed as any offer, undertaking, representation or warranty whatsoever, whether express or implied, on the part of the Vendor regarding the Development or any part thereof, and its surrounding environment, buildings, facilities or environment. The Vendor also advises prospective purchasers to conduct an on-site visit for a better understanding of the development site, its surrounding environment and the public facilities nearby. The completion date of the clubhouse and/or recreational facilities is subject to the final approval by the Buildings Department, the Lands Department and/or other relevant Government departments and authorities and they may not be immediately available for use upon the date of occupation of the residential properties of the Development. Use or operation of certain facilities and/or services shall also be subject to issuance of the relevant consents or licenses from the Government and may be subject to additional charges.
2. This image shall not constitute or be construed as the Vendor's offer, representation, undertaking or warranty, whether express or implied, as to whether limousine services will be provided at the Development.
3. "Orchid Garden", "Green Kitchen", "Botanic Library", "Grand Garden", "Grand Lounge", "Grand Room", "Grand House", "The Woods", "Fun Lab", "The Library", "Yoga Room" and "Sports Court" are promotional names and are displayed in promotional materials only and are only used for marketing purpose. They will not be displayed in Deed of Mutual Covenant, Preliminary Agreements for Sale and Purchase, Agreements for Sale and Purchase, Assignments or other title deeds and documents in respect of the Development.

Name of Street and Street Number of  
Phase I & Phase II of the Development:  
No.33 Hip Wo Street | District:  
Kwun Tong (South) | Website address:  
[www.grandcentral.hk](http://www.grandcentral.hk)<sup>#</sup> | This advertisement/  
promotional material shall not constitute  
or be construed as the Vendor  
giving any offer, representation,  
undertaking or warranty, whether

express or implied. The photographs, images, drawings or sketches shown in this advertisement/ promotional material represent an artist's impression of the development concerned only. They are not drawn to scale and/or may have been edited and processed with computerized imaging techniques. Prospective purchasers should make

reference to the sales brochure for details of the development. The vendor also advises prospective purchasers to conduct an on-site visit for a better understanding of the development site, its surrounding environment and the public facilities nearby.

Vendor: Urban Renewal Authority (“the Owner”) (as the legal or beneficial owner of the residential properties concerned in Phase I coordinate and supervise the process of designing, planning, constructing, fitting out, completing and marketing Phase I and Phase II of the Investments Limited); Tsim Sha Tsui Properties Limited, Sino Land Company Limited, King Chance Development Limited and Power Elite Wing Che (from 1 March 2019). The firm or corporation of which the Authorized Person for Phase I and Phase II of the Development is Phase II of the Development: CR Construction Company Limited. The firms of solicitors acting for the Owner in relation to the sale of Lau Solicitors & Notaries and Sit, Fung, Kwong & Shum. Authorized institution that has made a loan or has undertaken to provide finance has been cancelled). Authorized institution that has made a loan or has undertaken to provide finance for the construction of Phase II of loan for the construction of Phase I and Phase II of the Development: King Chance Development Limited and Tycoon Fame Limited (Note: Phase II of the Development comprises 2 residential towers with a total of 974 residential properties. This advertisement is published by Development for the purposes of Part 2 of the Residential Properties (First-hand Sales) Ordinance. Prospective purchasers are advised to of Production: 19 July 2021

and Phase II of the Development), Union Score Investments Limited (“the person so engaged”) (as the person engaged by the Owner to Development.) Holding company of the vendor (Urban Renewal Authority): Not applicable. Holding company of the vendor (Union Score Ventures Limited. Authorized Person for Phase I and Phase II of the Development: Tang Kwok Wah Owen (until 28 February 2019) , Chan a proprietor, director or employee in his or her professional capacity: Wong Tung & Partners Limited. Building Contractor for Phase I and residential properties in Phase I and Phase II of the Development: Mayer Brown, Woo Kwan Lee & Lo, King & Wood Mallesons, Chu & for the construction of Phase I of the Development: China Construction Bank (Asia) Corporation Limited (Note: the relevant undertaking the Development: Bank of China (Hong Kong) Limited (Note: the relevant undertaking has been cancelled). Other person who has made a the relevant loans have been repaid) . Phase I of the Development comprises 2 residential towers with a total of 1,025 residential properties the person so engaged with consent of the Owner. #The address of the website designated by the Vendor for Phase I and Phase II of the refer to sales brochures for any information of Phase I and Phase II of the Development. Please refer to the sales brochure for details. Date

# GRAND CENTRAL 凱滙

[www.grandcentral.hk](http://www.grandcentral.hk)

Enquiry Hotline:

8108 0318



Grand Central  
凱滙網站



Lifescape  
Collections  
Instagram

